

## LIP-INK® COLOR APPLICATION

**NOTE:** Upon first application of our classic Lip-Ink® color, to ensure proper color, you must first wipe the tip of the applicator.

- ① Always begin by purifying the lips with the **OFF** solution. This not only cleanses your lips but helps with the exfoliation process.



- ② Splash your lips with water. Pat dry.



- ③ If liner is desired, use a liner brush and frame with **LIP-INK® COLOR** now.



Note: for LipGel color skip 3,4&5

- ④ Massage a small amount of **SHINE/TINTED SHINE MOISTURIZER** or **WAXLESS LIP BALM™** into the lips until thoroughly absorbed.



- ⑤ To blend pigment, shake vial of **COLOR** against palm for 3-5 seconds. This is a liquid. Open with care.



- ⑥ Wipe all excess **LIQUID COLOR** from the applicator wand.



- ⑦ Relaxed your lips. Using the widest portion of the applicator, apply the **COLOR** with a gentle even pressure. Move in one direction only. Do not blot.



- ⑧ Allow color to dry (10-20 sec.) with lips in a slightly parted relaxed position.



- ⑨ Repeat steps ⑦ & ⑧ twice. For a total of three layers of color. This provides maximum coverage.



- ⑩ Finish with a final coat of **SHINE/MOISTURIZER**. This can be reapplied throughout the day.



- ⑪ Apply more **SHINE** for a high gloss finish or blot with tissue for a matte finish.



Please read through all instructions before opening LIP-INK® products. This product may cause a tingling sensation - this is normal.

SAFE PRODUCT USE: If you experience any skin irritation or reaction, discontinue use of this product. Do not apply inside of eye.

## LIP-INK® EYE LINER APPLICATION

- ① Shake vial against palm for 3-5 seconds.



- ② This is a liquid. Open with care. Wipe excess into bottle.



- ③ Hold applicator out to breathe 10 sec. **THIS IS IMPORTANT OR TEARING MAY OCCUR.**



- ④ Apply to outer lid only.



- ⑤ Do not apply to inner lid.



## LIP-INK® LASH TINT APPLICATION

Apply directly to upper & lower lashes in one direction. Use up to 3 layers to add color tint. **LASH TINT** will not add fullness or length — just incredible color. For deeper color and thicker and longer lashes, use your regular mascara over the top of **LIP-INK® LASH TINT**.

## LIP-INK® BROW &amp; LASH CONDITIONER

Our clear patented moisturizer formula both shapes the brows and adds sheen and moisture to your bare lashes. Use as a base coat with **LIP-INK® LASH TINT** for moist, beautiful, stay-on lash color.

## LIP-INK® MIRACLE BROW™ LINER APPLICATION

- ① Shake vial against palm for 3-5 seconds.



- ② This is a liquid. Open with care. Wipe excess liquid into bottle.



- ③ Apply color to skin beneath the brow. Work with the natural growth of hair.



- ④ Comb through with the brush provided to reduce shine and integrate color into the existing brow.



## LIP-INK® MIRACLE BROW™ TINT APPLICATION

Apply **BROW & LASH CONDITIONER** first. Add color to brow hair—I to 2 layers in one direction with the growth of the hair. **MIRACLE BROW™ TINT** works to tint and define your brows or cover grey areas. Use **LIP-INK® OFF** to remove **MIRACLE BROW™ TINT**.



## GUIDELINES FOR SAFE PRODUCT USE:

- LIP-INK® PATENTED WAX FREE™ SEMI-PERMANENT COSMETICS™ are a liquid and can spill. Always keep vial in a vertical position and remove applicator slowly.
- You may feel a strong tingling sensation when applying **LIP-INK® WAX FREE™ SEMI-PERMANENT LIP COLOR**. This is normal and comes from feeling the 190 proof, rosemary flavored, corn grain alcohol on your lips. It keeps **LIP-INK® COSMETICS** antiseptically fresh and preservative free.
- Make sure you use **LIP-INK® SHINE/MOISTURIZER** before applying the **COLOR**.
- The product works best when it is applied to clean, dry lips.
- Use **LIP-INK® OFF** to get the lips clean. Then splash with water.
- Avoid opening while in flight — as air pressure may cause splatter or leakage.

- We do not recommend using **LIP-INK® MIRACLE BROW™ LINER** or **LIP-INK® LIP LINER** as eye liner.
- We suggest that you do not use **LIP-INK® COSMETICS** with any other lipstick or eye products. Including petroleum jelly, wax, lip balm or Chapstick-type products either over or under **LIP-INK® COSMETICS**. They are not compatible and will compromise the staying power of **LIP-INK® COSMETICS**.

- Keep product away from heat and flame!
- Avoid contact with the inner eye or broken skin.
- If you notice any adverse reaction, discontinue use. If irritation persists, consult a physician.
- Keep **LIP-INK® COSMETICS** out of the reach of children.
- Avoid contact with clothing and carpeting. If you have a stain or spill, **LIP-INK® OFF** may be used, along with warm water and soap.

## LIP INK International – The World's Only Wax Free 100% Smearproof Liquid Lip, Brow, Lash and Eye Color Cosmetics

## LIP MOISTURIZERS

**LIP-INK® MATTE SHINE MOISTURIZER** Acts as a base conditioner when applied under any LIP-INK® COLOR. A light layer of LIP-INK® MATTE SHINE MOISTURIZER™ on top creates a moist, matte silky feeling. LIP-INK® MATTE SHINE MOISTURIZER™ goes on with a sheen and quickly transforms to a silky matte finish. Contains age-fighting antioxidants, vitamins and moisturizers that hydrates, soothes, and conditions your lips. Natural light reflectors ease the signs of sun damage. LIP-INK® MATTE SHINE MOISTURIZER™ can be synergistically used with any of the Lip-Ink® Moisturizers.

**LIP-INK® 3D LIPMAX™** was designed specifically to hydrate the lips and restore glycosaminoglycans and collagen, increasing lip moisture and adding volume to improve the contour of the lips and give better definition to the lip line. 3D LipMax™ also significantly reduces the appearance of fine lines to make dry, chapped, desquamating lips a thing of the past. Lip-Ink® 3D LipMax™ Lip Volumizer creating a building block of: VOLUME, CONTOUR & HYDRATION.

**LIP-INK® BRILLIANT TINTED SHINE™ MOISTURIZER** This acts as a base conditioner when applied under Lip-Ink® Lip Color™. A light layer of Lip-Ink® Brilliant Tinted Shine™ on top creates a moist silky feeling. A more generous application transforms a matte finish into a high gloss shine. Contains age-fighting anti-oxidants, vitamins and moisturizers that hydrate, soothe, and condition your lips.

## PERSONAL CARE

**LIP-INK® LIP SMOOTHE SCRUB** Macadamia Nut Oil is the closest natural oil to our own skin's oil, so it absorbs well. Combined with natural sea salt to exfoliate, natural essential oils give you silky smooth renewed lips, plant protein peptides build collagen tissue for fuller, more defined lips and flavor extracts soothe your soul.

**LIP-INK® PRO-COLLAGEN HAIR TREATMENT** Extreme Volume Protein Collagen Hair Treatment Imparts luster, body and fullness like you have never experienced before. Our unique combination of whey protein with high quality amino acids and collagen blended with cherry bark, low molecule protein amino acids and natural humectants give you thicker, stronger, healthier hair.

**LIP-INK® HERBAL DEODORANT** Whether you sweat or perspire, Lip Diva's® Lip-Ink® Herbal Deodorant will excite your body. Using only natural ingredients, Lip Diva's® Lip-Ink® Herbal Deodorant™ let's you be confident with your scent—no matter how hard you work. Feel just showered fresh, all day long. The unique blend of herbs and botanicals work synergistically with your body's natural chemistry to suppress odor causing bacteria. PH balanced.

**LIP-INK® HERBAL SPRAY FOOT SPA** Keep your feet cool, clean, and refreshed with Lip Diva's® Lip-Ink® Herbal Foot-Spa™ Spray. This potent herbal-botanical formulation possesses anti-bacterial, anti-fungal properties that suppress unpleasant odors. Feel confident about your feet day and night.

**LIP-INK® AROMA THERAPY AIR REFRESHER** Excite your Senses! Lip-Ink® Aroma therapy Air refresher™ is a sensual blend of herbs and botanicals designed to refresh, rejuvenate, and relax you. Move more deeply into your feminine spirit. Excite all of your senses. Directions for use: Spray in the air, or on your sheets, pillowcases and linens.

## ACCESSORIES

**LIP-INK® BRILLIANT MAGIC POWDERS™** They are truly magical. To the eye, they appear off white, but when gently brushed between layers of Lip-Ink® Lip Color™, they magically bond to the finish, creating an iridescent veil of highlights.

## LIPGEL COLOR

**LIP-INK® FACE BLUSH & BRONZER** Light-reflective pigments direct attention away from lines and wrinkles, creating a smooth, irresistible look.

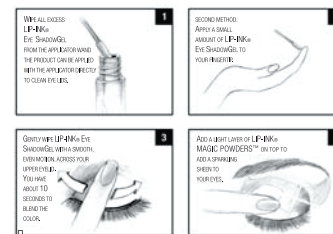
**LIP-INK® SHIMMERGELS™** with LipFlex™ Technology. Pure magic on your lips. The new Gel format makes it simple to add sparkle, sheen, and superior elegance to your favorite Lip-Ink® lip colors. Use over and under all Lip-Ink® LipGel™ Lip Sticks to brighten your days and dazzle your night! Now in multiple sparklingly luscious ShimmerGel™ Colors. Express yourself magically! Hand Crafted in the USA by the Lip Diva™. Each of the ShimmerGel™ colors can also be used to highlight and enhance your cheeks, brows, and eyelids.

**LIP-INK® LipGel™ LIP STICKS** Illuminate your face! NEW light-reflective pigments direct attention away from lines and wrinkles, creating a smooth, irresistible, kissable look.

**LIP-INK® NEON GELS™ LIP STICKS** provide bright staining colors to give you the longest lasting, brightest colors in the Lip-Ink® lip color pallet.

## EYES

**LIP-INK® EYE SHADOW GELS** These incredible light-reflective pigments direct attention away from wrinkles, blending with your skin to create a smooth, silky, luminous look. Reflective Markers for your eyes!



\*These Colors can be worn on the lips as well to add highlights

## EYE RESTORE MAGIC POWDER CREAM

**TENSION RELIEF-LINE PREVENTION** A lip-dipeptide plant derived complex which promotes happiness and tranquilizes stressed skin to alleviate tension that contributes to the onset of expression lines and wrinkles around the eye and mouth areas.

**LIGHTENING, BRIGHTENING AND DEPIGMENTATION** Natural root and herb extracts lighten and brighten and achieve fairer, whiter looking skin to treat age spots, freckles around the lip and eye area. UVA, UVB sun protectors.

**C VITAMIN ESTERS A TOTAL ANTIOXIDANT PROGRAM** To stimulate the synthesis of collagen, which is natural and needed as the collagen production decreases as you age, Studies have shown that Vitamin C helps to minimize fine lines, wrinkles and scars around the lip and eye areas, also alleviating dryness and improving skin texture and smoothness, protecting the cells from environmental damage.

**DIRECTIONS FOR USE:** tap a small amount of Eye Restore Magic Powder Restore Powder, from the sifter jar, on to hand. Massage with finger to achieve cream. Apply product with finger, by simply tapping it slightly onto the skin tissue around the eye area, then lightly massage it in, until a light smooth feel has been achieved. Remember less is better, you will see some results right away, and as you continue to use this product you will achieve better results. It is recommended to use this product on clean dry skin and or over Eye Restore Magic Powder Cream.

SAFE PRODUCT USE: If you experience any skin irritation or reaction, discontinue use of this product. Do not apply inside of eye.



## LIP INK® INTERNATIONAL – The World's Only Wax Free 100% Smearproof Liquid Lip, Brow, Lash and Eye Color Cosmetics

**LIP-INK® INTERNATIONAL – The World's Original Patented Wax Free™ Semi-Permanent Lip, Brow, Lash, and Eye Color Cosmetics™.** All LIP-INK® Cosmetics are skillfully handcrafted by Lip Dwa™, and inventor—*Rose Nichols*. By combining an extraordinary blend of herbs and botanicals, with traditional and innovative color pigments, Rose personally strives to satisfy the cosmetic needs of active women.

All LIP-INK® Cosmetics (lip color, etc.) ingredients are hypoallergenic—free of wax, animal fat, cholesterol, and preservatives.

LIP-INK® Cosmetics are Waxless, Waterproof, Smearless, Ultra-durable and Preservative Free™.

LIP-INK® Cosmetics are Moisturizing and Tingly Fresh™.

LIP-INK® Cosmetics will Revive and Renew your lips with its natural exfoliation process.

In short, LIP-INK® LIQUID LIP COLOR is the only healthy alternative to lipstick. All LIP-INK® Color Cosmetic products are handcrafted in the USA and are manufactured from ingredients that meet U.S. FDA and CFTA standards and guidelines for cosmetic products. U.S. Patent: 5747017, 5071079, 6001374, 6027739, 6203809, 6395263, other U.S. Patents Pending. Australian Patent: 701794, 736718, other patents pending.

LIP-INK® COLOR Cosmetics are based on scientific research and are protected by U.S. and International patents. Competitive products cannot legally duplicate LIP-INK® COLOR Cosmetics and their precise chemistry.

**LIP-INK® COLOR/ULTRA COLOR™:** Recommended by Hollywood make-up artists. So sheer it is on the water, yet it will last up to 24 hours. You can eat, sleep, shower, and have fun wearing it! It's virtually impossible to smear, and won't bleed or flake. Formulated with over 40 herbs and botanicals to heal, condition, and moisturize your lips. Layer up to three layers to create an unlimited palette of personalized colors. Alter color intensity by layering with LIP-INK® CLEAR, CHAKRAS, or WOOD COLORS.

**LIP-INK® CLEAR:** This has the same superb ingredients that make up LIP-INK® COLOR – minus the pigments. You can replace one or more layers of the LIP-INK® COLOR application, or use it to "lock in" MAGIC POWERS™. An absolute must for your LIP-INK® cosmetic portfolio.

**LIP-INK® WOOD COLORS/LIP-INK® TONERS/CHAKRAS:** The WOOD COLORS feature eight semitransparent natural earth tones resembling the gentle hues found inside of trees. Use alone for a relaxed, natural look, or layer deeper colors to lighten, tone, and accentuate. Apply UNSEX TONER to mute colors.

Apply LEMON TONER to brighten, CHAKRAS are Soft, Pastel, Retro, Sheer. Use dynamic LIP-INK® MAGIC POWERS™ between layers for shimmering radiance. All make dazzling accessories to lighten the classic LIP-INK® COLORS. Layer, Mix, Match, and have fun exploring your color universe.

**LIP-INK® COLOR/ULTRA/CHAKRAS/LIP-INK® LIP LINER & LIP TONER COLORS:**

SD ALCOHOL 38-B, WATER, CASTOR OIL, CELLULOSE, ETHYLCELLULOSE, ROSEMARY OIL, ROSEMARY EXTRACT, MATRICARIA EXTRACT, TRIFOLIUM PRATENSE, ALTHEA EXTRACT, OAK BARK EXTRACT, CALENDULA EXTRACT, COMFREY LEAF EXTRACT, ECHINACIN, SAGE OIL, SAGE EXTRACT, CORNFLOWER EXTRACT, GOLDEN SEAL ROOT EXTRACT, BURDOCK ROOT EXTRACT, PEPPERMINT EXTRACT, DANDELION ROOT, GINGER ROOT EXTRACT, MYRICA CERIFERA EXTRACT, SKULLCAP EXTRACT, VALERIAN EXTRACT, PARSLEY EXTRACT, FENNEL EXTRACT, BERBERIS VULGARIS ROOT EXTRACT, PRAIRIE DOCK ROOT EXTRACT, EUPHRASIA EXTRACT, RED RASPBERRY EXTRACT, PLANTAIN EXTRACT, SLIPPERY ELM EXTRACT, CHICKWEED EXTRACT, ARNICA, BLESSED THISTLE EXTRACT, ELECAMPANE EXTRACT, OAT EXTRACT, GRAPE SEED EXTRACT, BETA-CAROTENE, ALLANTOIN, ALUMINA, ARROWROOT, CAMELLIA, SINENSIS LEAF EXTRACT, CI 75810, SILICA, GLYCERIN, ETHYL VANILLIN, DIPOTASSIUM GLYCERYLPHOSPHATE, AHNFELTIA CONCINNA EXTRACT, SILICA ASCORBYL PALMITATE, ASCORBIC ACID, CITRIC ACID, ALUMINUM/MAGNESIUM HYDROXIDE, STEARATE, SODIUM SULFATE, POTASSIUM SULFATE, MONOHYDRATE, MAGNESIUM SULFATE, CALCIUM SULFATE, ZINC SULFATE, OCTYLACRYLAMIDE/ACRYLATES/BUTYL METHACRYLATE, COPOLYMER, AMINOPROPYL ASCORBYL PHOSPHATE, COPPER SULFATE, MANGANESE SULFATE, POTASSIUM BORATE, POTASSIUM IODIDE, CALCIUM CHLORIDE, PENTAHYDRATE.

**MAY CONTAIN:** MICA, TITANIUM DIOXIDE, BISMUTH OXYCHLORIDE, MANGANESE VIOLET, BRONZE POWDER, COPPER POWDER, ZINC OXIDES, ANNATTO, CAMEL, BETA-CAROTENE, IRON OXIDES.

**US:** ALUMINUM LAKE YELLOW NOS. 5, 6, 10, ZIRCONIUM LAKE YELLOW NO. 5, YELLOW NOS. 5, 6, 10, ALUMINUM LAKE RED NOS. 21, 22, 27, 28, 30, 33, 40, RED NOS. 6, 21, 22, 27, 28, 33, 36, ZIRCONIUM LAKE RED NOS. 21, 27, 33, POTASSIUM LAKE RED NO. 6, BARIUM LAKE RED NO. 6, SODIUM SALT RED NO. 6, CALCIUM LAKE RED NO. 7, TALC LAKE RED NO. 30, ALUMINUM LAKE BLUE NO. 1, ZIRCONIUM LAKE ORANGE NO. 5, ALUMINUM LAKE ORANGE NO. 5, ORANGE NO. 5, GREEN NO. 3, 5.

**MAY CONTAIN:** EU INCI: 77019, 77891, 77613, 77742, 77400, 77947, 75120, CAMEL, 75130, 77491, 77492, 77499, 19140, 15985, 47005, 45380, 2, 45380, 45410, 1, 45410, 73360, 17200, 16035, 15850, 12085, 10316, 42090, 45370, 1, 42053, 61570.

**LIP-INK® LIPGEL™ LIP STICKS/FACE BLUSH & BRONZING GEL/EYE SHADOW GEL/WHITE EYE LINER GEL:**

SD ALCOHOL 38-B, WATER, CASTOR OIL, ETHYLCELLULOSE, OCTYLACRYLAMIDE / ACRYLATES / BUTYL METHACRYLATE, COPOLYMER, MANGANESE SULFATE, POTASSIUM BORATE, POTASSIUM IODIDE, CALCIUM CHLORIDE, PENTAHYDRATE.

**LIP-INK® SHINE/TINTED SHINE/MOISTURIZER:** This acts as a base conditioner when applied under LIP-INK® COLOR. A light layer of SHINE on top creates a most silky feeling. A more generous application transforms a matte finish into a high gloss shine. Contains age-fighting anti-oxidants, vitamins and moisturizers that hydrate, soothe, and condition your lips. Natural light reflectors ease the signs of sun damage.

SHINE is available in both Natural (no color) and TINTED formulas.

**LIP-INK® LIQUID LIP LINERS:** Outline, enhance, and define your lips with our ultra-durable, patented formula. Mix and match with LIP-INK® COLORS for a sultry, sexy, stay on splash. Use alone and fill in with the TINTED SHINE/MOISTURIZER or TINTED WAXLESS LIP BALM™ for an irresistibly radiant look.

**LIP-INK® MAGIC BRILLIANT POWDERST™:** They are truly magical. To the eye, they appear off white, but when gently brushed between layers of LIP-INK® COLOR, they magically bond to the finish, creating an iridescent veil of highlights. Available in Gold, Diamond, Red, Violet, Amber, Grape, Blue Berry, Bubble Gum, Honey, Almond, Cinnamon, and Walnut.

**LIP-INK® EYE LINER:** Our premier eyeliner is the longest lasting eyeliner on the market. Laugh, cry, play, be yourself – confidently. LIP-INK® EYELINER is formulated especially for the sensitive area around the eyes.

**LIP-INK® MIRACLE BROW™ LINER:** Your eyebrows represent your openness to life. Designed especially for active women, LIP-INK® MIRACLE BROW™ LINER won't rub off! It's perfect for shaping your brows and filling in voids caused by scars, hair loss, or even tweezing. Put your best brows forward, with LIP-INK® MIRACLE BROW™ LINER.

**LIP-INK® LASH TINT/MIRACLE BROW™ TINT:** Add lash color by applying directly to upper and lower lashes. Apply up to 3 layers. Lash Tint will not add fullness or length – just incredible color. Brush LIP-INK® MIRACLE BROW™ TINT directly onto brow hairs to tint and define brows and conceal grey areas.

**LIP-INK® BROW AND LASH CONDITIONER:** Our clear, patented formula both shapes your brows and adds sheen and moisture to your bare lashes.

**LIP-INK® OFF/FOAMING OFF®:** Removes all LIP-INK® Cosmetics. The patented formula is pH balanced, safe, and gentle, even for use in the sensitive eye areas.

**LIP-INK® WAXLESS LIP BALM™/TINTED WAXLESS LIP BALM™:** Multi purpose, all weather, year round protection. 30 radiant colors contain age-fighting anti-oxidants, vitamins and moisturizers to hydrate, soothe, and condition the lips. Natural light reflectors ease the signs of sun damage. Use alone, or over and under LIP-INK® COLOR. Also available in Natural (no color).

COMFREY LEAF EXTRACT, ECHINACIN, SAGE OIL, SAGE EXTRACT, CORNFLOWER EXTRACT, GOLDEN SEAL ROOT EXTRACT, BURDOCK ROOT EXTRACT, PEPPERMINT EXTRACT, DANDELION ROOT, GINGER ROOT EXTRACT, MYRICA CERIFERA EXTRACT, SKULLCAP EXTRACT, VALERIAN EXTRACT, PARSLEY EXTRACT, FENNEL EXTRACT, BARBERRY BARK EXTRACT, PRAIRIE DOCK ROOT EXTRACT, EUPHRASIA EXTRACT, RED RASPBERRY EXTRACT, PLANTAIN EXTRACT, SLIPPERY ELM EXTRACT, CHICKWEED EXTRACT, ARNICA, BLESSED THISTLE EXTRACT, ELECAMPANE EXTRACT, OAT EXTRACT, GRAPE SEED EXTRACT, BETA-CAROTENE, ALLANTOIN, ALUMINA, ARROWROOT, CAMELLIA, SINENSIS LEAF EXTRACT, CI 75810, SILICA, GLYCERIN, ETHYL VANILLIN, DIPOTASSIUM GLYCERYLPHOSPHATE, AHNFELTIA CONCINNA EXTRACT, ASCORBYL PALMITATE, ASCORBIC ACID, CITRIC ACID, ALUMINUM/MAGNESIUM HYDROXIDE, TERATE, SODIUM SULFATE, POTASSIUM SULFATE, MONOHYDRATE, MAGNESIUM SULFATE, CALCIUM SULFATE, ZINC SULFATE, AMINOPROPYL ASCORBYL PHOSPHATE, COPPER SULFATE, MANGANESE SULFATE, POTASSIUM BORATE, POTASSIUM IODIDE, CALCIUM CHLORIDE, PENTAHYDRATE, DIMETHICONE, CELLULOSE GUM, DIMETHICONE, COPOLYOL, HYDROXYETHYLCELLULOSE, HYDROXYPROPYL CELLULOSE, CYCLOMETHICONE.

**MAY CONTAIN:** EU INCI: 77019, 77891, 77613, 77742, 77400, 77947, 75120, CAMEL, 75130, 77491, 77492, 77499, 19140, 15985, 47005, 45380, 2, 45380, 45410, 1, 45410, 73360, 17200, 16035, 15850, 12085, 10316, 42090, 45370, 1, 42053, 61570.

**LIP-INK® EYE LINER/LASH TINT/MIRACLE BROW™ TINT/MIRACLE BROW™ LINERS:**

SD ALCOHOL 38-B, WATER, CASTOR OIL, CELLULOSE, ETHYLCELLULOSE, OCTYLACRYLAMIDE / ACRYLATES / BUTYL METHACRYLATE, COPOLYMER, ROSEMARY OIL, ROSEMARY EXTRACT, MATRICARIA EXTRACT, TRIFOLIUM PRATENSE, ALTHEA EXTRACT, OAK BARK EXTRACT, CALENDULA EXTRACT, COMFREY LEAF EXTRACT, ECHINACIN, SAGE OIL, SAGE EXTRACT, CORNFLOWER EXTRACT, GOLDEN SEAL ROOT EXTRACT, BURDOCK ROOT EXTRACT, PEPPERMINT EXTRACT, DANDELION ROOT, GINGER ROOT EXTRACT, MYRICA CERIFERA EXTRACT, SKULLCAP EXTRACT, VALERIAN EXTRACT, PARSLEY EXTRACT, FENNEL EXTRACT, BERBERIS VULGARIS ROOT EXTRACT, PRAIRIE DOCK ROOT EXTRACT, EUPHRASIA EXTRACT, RED RASPBERRY EXTRACT, PLANTAIN EXTRACT, SLIPPERY ELM EXTRACT, CHICKWEED EXTRACT, ARNICA, BLESSED THISTLE EXTRACT, ELECAMPANE EXTRACT, OAT EXTRACT, GRAPE SEED EXTRACT.

**MAY CONTAIN:** MICA, TITANIUM DIOXIDE, BISMUTH OXYCHLORIDE, MANGANESE VIOLET, BRONZE POWDER, COPPER POWDER, ZINC OXIDES, ANNATTO, CAMEL, BETA-CAROTENE, IRON OXIDES.

**US:** ALUMINUM LAKE YELLOW NOS. 5, 6, 10, ZIRCONIUM LAKE YELLOW NO. 5, YELLOW NOS. 5, 6, 10, ALUMINUM LAKE

## LIP-INK® INTERNATIONAL – Ingredients

BETA-CAROTENE, ALLANTOIN, ALUMINA, ARROWROOT, CAMELLIA, SINENSIS LEAF EXTRACT, CI 75810, SILICA, GLYCERIN, ETHYL VANILLIN, DIPOTASSIUM GLYCERYLPHOSPHATE, AHNFELTIA CONCINNA EXTRACT, SILICA ASCORBYL PALMITATE, ASCORBIC ACID, CITRIC ACID, ALUMINUM/MAGNESIUM HYDROXIDE, TERATE, SODIUM SULFATE, POTASSIUM SULFATE, MONOHYDRATE, MAGNESIUM SULFATE, CALCIUM SULFATE, ZINC SULFATE, AMINOPROPYL ASCORBYL PHOSPHATE, COPPER SULFATE, MANGANESE SULFATE, POTASSIUM BORATE, POTASSIUM IODIDE, CALCIUM CHLORIDE, PENTAHYDRATE.

**LIP-INK® 3D LIPWAX VOLUMIZER™ /TINTED LIPWAX VOLUMIZER™:**

JOJOBA OIL, ETHYLHEXYL PALMITATE, TRIBENHIN SORBITAN ISOSTERATE, PALMITOYL-OLIGOPEPTIDE, OLIVE LEAF EXTRACT, CLOVE OIL, TOCOPHERYL LINOLEATE, TOCOPHEROL ACETATE, PANTHENOL, ASCORBYL PALMITATE, ASCORBIC ACID, CITRIC ACID, BETA-CAROTENE, PHENOXYETHANOL, IRON OXIDE, CINNAMON OIL, PEPPERMINT OIL, CAROTENE.

**US:** ALUMINUM LAKE RED NO. 40, ALUMINUM LAKE BLUE NO. 1, ALUMINUM LAKE YELLOW NO. 5, CHROMIUM OXIDE GREEN, HYDRATED, CHROMIUM OXIDE GREEN.

**MAY CONTAIN:** EU INCI: 75120, 77007, 77013, 77019, 77891, 77163, 77400, 77491, 77492, 77499, 77947, 77742, CAMEL, 75130, 19140, 16035, 42090, 77288, 77289.

**LIP-INK® LIP SHINE/WAXLESS LIP BALM/BROW & LASH CONDITIONER:** ASCORBIC ACID, OCTYL METHOXYCINNAMATE, PHENOXYETHANOL, PANTHENOL, OCTYL SALICYLATE, SILICA, TOCOPHERYL LINOLEATE, TOCOPHERYL ASCORBYL PALMITATE, CITRIC ACID, DIMETHICONE, TRIMETHYLSILOXYLICATE.

**LIP-INK® TINTED SHINE MOISTURIZER/TINTED WAXLESS LIP BALM/FLAVORED SHINE MOISTURIZER/LIP-INK® MOISTURIZER:**

DIMETHICONE, SILICA, TOCOPHERYL LINOLEATE, DIMETHICONE, TRIMETHYLSILOXYLICATE, CYCLOMETHICONE, OCTYL METHOXYCINNAMATE, PHENOXYETHANOL, PANTHENOL, OCTYL SALICYLATE, TOCOPHERYL ASCORBYL PALMITATE, ASCORBIC ACID, CITRIC ACID, HONEY, CINNAMON OIL, PEPPERMINT OIL, STEVIA LEAF POWDER, FLAVOR.

**MAY CONTAIN:** MICA, TITANIUM DIOXIDE.

**MAY CONTAIN:** EU INCI: 77019, 77891.

**LIP-INK® HYPER LIP SHINE MOISTURIZER:** DIMETHICONE, ASCORBIC ACID, CITRIC ACID, DIMETHICONE, TRIMETHYLSILOXYLICATE, CYCLOMETHICONE, PHENOXYETHANOL, PANTHENOL, OCTYL SALICYLATE, SILICA, TOCOPHERYL LINOLEATE, TOCOPHERYL ASCORBYL PALMITATE.

**LIP-INK® 3D LIPWAX VOLUMIZER™ /TINTED LIPWAX VOLUMIZER™:**

JOJOBA OIL, ETHYLHEXYL PALMITATE, TRIBENHIN SORBITAN ISOSTERATE, PALMITOYL-OLIGOPEPTIDE, OLIVE LEAF EXTRACT, CLOVE OIL, TOCOPHERYL LINOLEATE, TOCOPHEROL ACETATE, PANTHENOL, ASCORBYL PALMITATE, ASCORBIC ACID, CITRIC ACID, BETA-CAROTENE, PHENOXYETHANOL, IRON OXIDE, CINNAMON OIL, PEPPERMINT OIL, CAROTENE.

**LIP-INK® BRILLIANT TINTED SHINE MOISTURIZER WITH 3D LIPWAX VOLUMIZER:**

JOJOBA OIL, ETHYLHEXYL PALMITATE, TRIBENHIN SORBITAN ISOSTERATE, PALMITOYL-OLIGOPEPTIDE, OLIVE LEAF EXTRACT, TOCOPHERYL ACETATE, TOCOPHEROL LINOLEATE, PANTHENOL, ASCORBYL PALMITATE, ASCORBIC ACID, CITRIC ACID, BETA-CAROTENE, PHENOXYETHANOL, DIMETHICONE, DIMETHICONE, TRIMETHYLSILOXYLICATE, CYCLOMETHICONE, OCTYL METHOXYCINNAMATE, PANTHENOL, OCTYL SALICYLATE, SILICA, TOCOPHEROL ASCORBYL PALMITATE, NATURAL FLAVOR.

**MAY CONTAIN:** MICA, TITANIUM DIOXIDE.

**MAY CONTAIN:** EU INCI: 77019, 77891.

**LIP-INK® LIP SMOOTHIE SCRUB:**

MACADAMIA NUT OIL, SODIUM CHLORIDE, SEA SALT, CHAMOMILE, SAGE, ROSEMARY, BANANA EXTRACT.

**LIP-INK® OFF/FOAMING OFF®:**

WATER, DISODIUM POTASSIUM SULFATE, COCOPHOSPHATE, TRISODIUM PHOSPHATE, GLYCERIN, ALOE, PHENOXYETHANOL, POLOXAMER 407, SODIUM SACCHARIN, XANTHAN GUM, SODIUM SULFATE, MONOHYDRATE, MAGNESIUM SULFATE, CALCIUM SULFATE, ZINC SULFATE, AMINOPROPYL ASCORBYL PHOSPHATE, COPPER SULFATE, MANGANESE SULFATE, POTASSIUM BORATE, POTASSIUM IODIDE, CALCIUM CHLORIDE, PENTAHYDRATE, IMIDAZOLIDINYL.

**LIP-INK® PROTEIN COLLAGEN HAIR TREATMENT:**

WATER, CHERRY BARK EXTRACT, CITRIC ACID, PHOSPHORIC ACID, VEGETABLE OIL, KERATIN, SODIUM BENZOATE, SORBIC ACID, FRUCTOSE, POTASSIUM UNDECYLOLENOYL HYDROLYZED SOY PROTEIN, POTASSIUM ABIEOYL HYDROLYZED SOY PROTEIN, POTASSIUM COCOYL HYDROLYZED OAT PROTEIN, GLYCERYL STEARATE, SODIUM COCOYL HYDROLYZED SWEET ALMOND PROTEIN, POTASSIUM COCOYL HYDROLYZED SOY PROTEIN, GLYCERYL STEARATE, YUCCA SCHIDIGERA EXTRACT.

**LIP-INK® HERBAL DEODORANT™:**

WATER, SD ALCOHOL 38-B, PHENOXYETHANOL, DIPOTASSIUM GLYCERYLPHOSPHATE, LAVENDER EXTRACT, SAGE EXTRACT, CHAMOMILLA RECUTITA EXTRACT, GRAPEFRUIT PEEL OIL.

**LIP-INK® HERBAL SPRAY™ FOOT SPA™:**

WATER, SD ALCOHOL 38-B, PHENOXYETHANOL, DIPOTASSIUM GLYCERYLPHOSPHATE, GRAPEFRUIT PEEL OIL, SAGE EXTRACT, CHAMOMILLA RECUTITA EXTRACT.

**LIP-INK® AROMA THERAPY AIR REFRESHER™:**

WATER, SD ALCOHOL 38-B, PHENOXYETHANOL, DIPOTASSIUM GLYCERYLPHOSPHATE, LAVANDULA ANGUSTIFOLIA, SAGE EXTRACT, CHAMOMILLA RECUTITA EXTRACT.

**LIP-INK® BRILLIANT MAGIC POWDERS™:**

MICA, TITANIUM DIOXIDE.

**EU INCI:** 77019, 77891.

**LIP-INK® EYE RESTORE MAGIC POWDER CREAM:**

WATER, OCTINOXATE, MICA, POLYMETHYLSILOXOXANE, SILICA, DIMETHYL SYLATE, GLYCOSYL, TREHALOSE, GLYCERIN, SACCHARIDE ISOMERATE, MAGNESIUM ASCORBYL PHOSPHATE, DIPOTASSIUM GLYCERYLPHOSPHATE, ALGAE EXTRACT, PHOSPHOLIPID, HYDROGENATED LECITHIN, IMIDAZOLIDINYL, HYALURONIC ACID, OCTYLALATE, OXIBZONE.

**LIP INK® MULTITASKING MATTE MOISTURIZING LIP STAIN**

DIMETHICONE, DIMETHICONE, TRIMETHYLSILOXYLICATE, CYCLOMETHICONE (AND) ALUMINA, OCTYL METHOXYCINNAMATE, PHENOXYETHANOL, PANTHENOL, OCTYL SALICYLATE, SILICON DIOXIDE, TOCOPHEROL LINOLEATE, TOCOPHEROL, ASCORBYL PALMITATE, ASCORBIC ACID, CITRIC ACID, ALUMINUM LAKE YELLOW NOS. 5, 6, 10, ZIRCONIUM LAKE YELLOW NO. 5, YELLOW NOS. 5, 6, 10, ALUMINUM LAKE RED NOS. 21, 22, 27, 28, 30, 33, 40, RED NOS. 6, 21, 22, 27, 28, 33, 36, ZIRCONIUM LAKE RED NO. 21, 27, 33.

POTASSIUM LAKE RED NO. 6, BARIUM LAKE RED NO. 6, SODIUM SALT RED NO. 6, CALCIUM LAKE RED NO. 7, TALC LAKE RED NO. 30, ALUMINUM LAKE BLUE NO. 1, ZIRCONIUM LAKE ORANGE NO. 5, ALUMINUM LAKE ORANGE NO. 5, ORANGE NO. 5, GREEN NOS. 3, 5.

**TRANSLUCENT TINT HYBRID COLOR ROLL ON**

DIMETHICONE, WATER, OLIVE OIL, ALCOHOL, ANTHYLUS, WITH HAZEL EXTRACT, GLYCERIN, IRON OXIDES (CI 77491).

**LIP INK® MIRACLE BROW® STAIN**

DIMETHICONE, DIMETHICONE, TRIMETHYLSILOXYLICATE, CYCLOMETHICONE, OCTYL METHOXYCINNAMATE, PHENOXYETHANOL, PANTHENOL, OCTYL SALICYLATE, TOCOPHEROL LINOLEATE, TOCOPHEROL, ASCORBYL PALMITATE, ASCORBIC ACID, CITRIC ACID, BETA-CAROTENE, ALLANTOIN, ALUMINA.



© 2017 LIP-INK®

**INTERNATIONAL.** Made in the U.S.A. Covered by one or more of the following U.S. and foreign patents:

57470, 7, 6001374,

610709, 6027739,

6203809, 6395263, 701794,

736718, 6509009,

225 Arena St,

El Segundo, CA 90245

[www.lipink.com](http://www.lipink.com)

ALL LIP-INK® PRODUCTS MEET F.A.A. AND C.T.F.A. GUIDELINES AND STANDARDS



Phone 310/414-9246 fax 310/414-9233 customerservice@lipink.com

Follow us on

LII-341 SDA-80007 06-01-07