

SAMPLER KIT

LIP-INK® SEMI-PERMANENT LIP COLOR

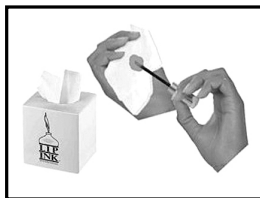


KIT INCLUDES:

- 2 LIP-INK® Liquid Lip Colors™ (.25 fl. oz. Each)
- 1 LIP-INK® Lip Shine Moisturizer™ (.25 fl. oz.)
- 1 LIP-INK® Liner Brush
- 1 LIP-INK® Off™ Vial (.27 fl. oz.)
- 1 LIP-INK® Off™ Conditioning Remover Refill Bottle (4 fl. oz.)
- 1 Color Chart and illustrated instructions

Not happy with your lip color or you want a lighter shade?

Be sure to blot the tip applicator with a tissue before applying your color. That puts you in the drivers seat when it comes to the shade of color you want. You control the botanical pigment of your application.



Tips for applying LIP-INK® Liquid Lip Color™



Take a tissue and wipe the color applicator tip to control the amount of color you want. This gives you the ability to control the shade of color desired. Any of the LIP-INK® Colors can become an instant lip liner with the use of a lip liner brush. Also included with your kit- to be reused as needed.

INGREDIENTS

LIP-INK® LIP COLOR

Sd Alcohol 38-B, Di Water, Castor Oil, Cellulose, Ethylcellulose, Octylacrylamide / Acrylates / Butylaminoethyl Methacrylate Copolymer, Rosemary Oil, Rosemary Extract, Matricaria Extract, Red Clover Oil, Althea Extract, Oak Bark Extract, Calendula Extract, Comfrey Leaf Extract, Echinacin, Sage Oil, Sage Extract, Cornflower Extract, Golden Seal Root Extract, Burdock Root Extract, Peppermint Extract, Dandelion Root, Ginger Root Extract, Bayberry Bark Extract, Skullcap Extract, Valerian Extract, Parsley Extract, Fennel Extract, Barberry Bark Extract, Prairie Dock Root Extract, Eye Bright Extract, Red Raspberry Extract, Plantain Extract, Slippery Elm Extract, Chickweed Extract, Arnica, Blessed Thistle Extract, Elecampane Extract, Oat Extract, Grape Seed Extract, Beta-Carotene, Allantoin, Alumina, Arrowroot, Green Tea Extract, Chlorophyll, Silicon Dioxide, Glycerin, Ethyl Vanillin, Dipotassium Glycyrrhizate, Butylene Glycol, Algae (Ahnfeltia Concinna Extract) Extract, Silica, Ascorbyl Palmitate, Ascorbic Acid, Citric Acid, Aluminum/Magnesium Hydroxide, Sodium Sulfate, Potassium Sulfate, Lithium Sulfate, Magnesium Sulfate, Calcium Sulfate, Zinc Sulfate, Phosphorus Phosphate, Copper Sulfate, Manganese Sulfate, Potassium Borate, Potassium Iodine, Calcium Chloride, Lithium Borate. **MAY CONTAIN:** Mica, Titanium Dioxide, Bismuth Oxide, Manganese Violet, Bronze Powder, Copper Powder, Zinc Oxide, Annatto, Caramel, Beta-Carotene, Iron Oxides, Aluminum Lake Yellow Nos. 5, 6, 10, Zirconium Lake Yellow No. 5, Yellow Nos. 5, 6, 10, Aluminum Lake Red Nos. 21, 22, 27, 28, 30, 33, 40, Red Nos. 6, 21, 22, 27, 28, 33, 36, Zirconium Lake Red Nos. 21, 27, 33, Potassium Lake Red No. 6, Barium Lake Red No. 6, Sodium Salt Red No. 6, Calcium Lake Red No. 7, Talc Lake Red No. 30, Aluminum Lake Blue No. 1, Zirconium Lake Orange No. 5, Aluminum Lake Orange No. 5, Orange No. 5, Green Nos. 3, 5.

LIP-INK® LIP SHINE MOISTURIZER

Dimethicone, Dimethicone Trimethylsiloxyethylsilicate, Cyclomethicone (And) Alumina, Octyl Methoxycinnamate, Phenoxethanol, Panthenol, Octyl Salicylate, Silicon Dioxide, Tocopherol Linoleate, Tocopherol, Ascorbyl Palmitate, Ascorbic Acid, Citric Acid

LIP-INK® CONDITIONING OFF REMOVER

Di Water, Disodium Cocamphodiolacetate, Trisodium Phosphate, Glycerin, Aloe, Phenoxethanol, Poloxamer 407, Xanthan Gum, Sodium Saccharin, Sodium Sulfate, Potassium Sulfate, Lithium Sulfate, Magnesium Sulfate, Calcium Sulfate, Zinc Sulfate, Phosphorus Phosphate, Copper Sulfate, Manganese Sulfate, Potassium Borate, Potassium Iodine, Calcium Chloride, Lithium Borate

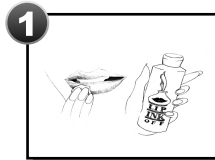
IMPORTANT REMINDER: Upon first application of our classic LIP-INK® Color™, to ensure proper color, you must first wipe the tip of the applicator. Remember to open the vials carefully, as LIP-INK®'s formulas are LIQUID. They can spill, or splatter and when in contact with clothing, carpet, etc. may stain.

NOTE: LIP-INK® products may tingle, this reaction is normal. The sensation is due to the natural herbs and botanicals. The LIP-INK® waxfree, guaranteed smearproof & long-lasting, multi-patented color product line is not compatible with any other cosmetic products. LIP-INK® Color Cosmetics are based on scientific research and are protected by U.S. and International patents. Competitive products cannot legally duplicate LIP-INK® Color Cosmetics and their precise chemistry. New customers should start with a kit when purchasing any of our guaranteed smearproof color. The codes that appear randomly on color and shine vials provide Internal QC information only.

SAFE PRODUCT FOR USE: If you experience any adverse reactions from use of this product, immediately discontinue use. Keep out of heat. The codes that appear randomly on vials provide Internal QC information only.

INTEGRITY.™ EMPOWERMENT.™ LOVE.™ FREEDOM.™

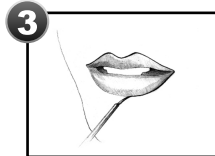
APPLYING LIP-INK® LIQUID LIP COLOR



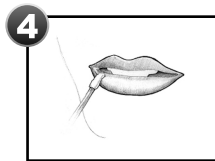
Always begin by purifying the lips with OFF Solution. This not only cleanses but helps with the exfoliation process.



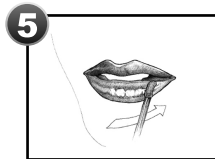
Splash with Water and pat dry.



If you usually line your lips, frame the lips with the LIP-INK® Liner (brush included).



Massage a small amount of Shine Moisturizer into the lips until thoroughly absorbed.



You are now ready to begin the colorization process, to create over one million guaranteed smearproof colors, by layering to suit your natural healthy lifestyle.



Blot the tip of your applicator on a tissue or dark cloth

Use **ASEIOD** (A Smooth Even Stroke In One Direction). This insures that your color goes on even Up to three layers. **FEEL THE TINGLE** This is the herbs, mints and botanicals. Finish with a layer of Lip Shine Moisturizer if desired.